



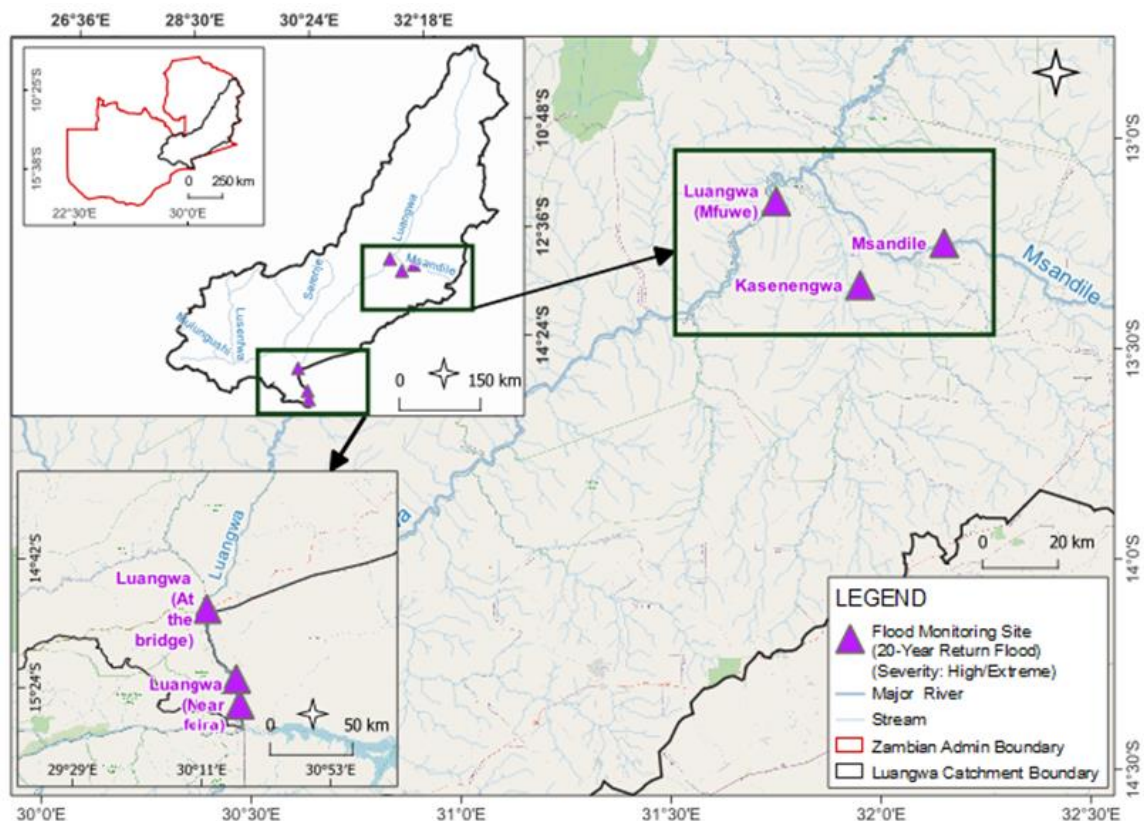
## FLOOD ALERT BY WARMA TO THE GENERAL PUBLIC

**ISSUED: 10th February 2023**

In line with Section 8 (2) (i) of the Water Resources Management Act No. 21 of 2011, the Authority wishes to inform the general public of an imminent emergency relating to flooding events in the following areas:

SUMMARY REPORT	
<b>River Name:</b> Luangwa <b>Tributary of:</b> Zambezi <b>District:</b> Luangwa <b>Peak Forecasted:</b> 20/02/2023 <b>Magnitude:</b> Severe	<b>River Name:</b> Msandile River <b>Tributary of:</b> Luangwa River <b>District:</b> Mambwe <b>Peak forecasted:</b> 12/02/2023 <b>Magnitude:</b> Severe
<b>River Name:</b> Kasenengwa <b>Tributary of:</b> Lutembwe <b>District:</b> Kasenengwa <b>Peak forecasted:</b> 12/02/2023 <b>Magnitude:</b> Severe <b>Affected Areas:</b> Nyamandela village, Chisenga School and the bridge near the River.	<b>River Name:</b> Luangwa <b>Tributary of:</b> Zambezi <b>District:</b> Mambwe <b>Peak forecasted:</b> 16/02/2023 <b>Magnitude:</b> Severe <b>Affected Areas:</b> Department of National Parks & Wildlife offices and the lodges close to the River bank.

**MAP SHOWING THE TRIGGERS AND AFFECTED AREAS**



**MEMBERS OF THE PUBLIC IN THE AFFECTED AREAS ARE URGED TO TAKE PRECAUTIONARY MEASURES TO AVOID THE ADVERSE EFFECTS OF THESE FLOOD EVENTS!!!!**